

中文題目：由前列腺膿瘍造成腸道阻塞之罕見病例分享

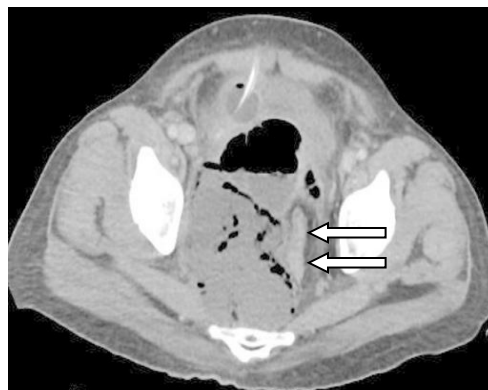
英文題目：Emphysematous Prostatitis Causing Mechanical Ileus: A Case Report

作者：張庭遠¹，梁博程²

服務單位：¹高雄醫學大學附設醫院 內科部，²小港醫院(委託高醫經營) 胃腸肝膽內科

Case Presentation

This 41-year-old male is a case of alcoholic liver cirrhosis. He suffered from spiking fever and dysuria since 1 month ago, and abdominal computed tomography(CT) showed emphysematous prostatitis with left obstructive nephropathy. Therefore, CT guided drainage, cystostomy, and oral antibiotics were administrated. Due to the patient's poor compliance, the symptoms persisted, so he came to our hospital again. Abdominal CT showed the mechanical ileus because of progressive prostatic abscess (The white arrows in right figure indicated compressed and shifted rectum by emphysemaouts abscess). Further colonoscopy revealed recto-sigmoid junction external compression. We performed CT-guide abscess drainage with indwelling pig-tail and gave him broad-spectrum intravenous antibiotic. Finally, his mechanical ileus improved and was discharge with out-patient-department follow-up.



Discussion

Emphysematous prostatitis is a rare complication of prostatitis. The standard treatment strategy is still controversial. Herein, we present a case successfully treated by pig-tail drainage and antibiotic. In addition, to the best of our knowledge, this is the first case of emphysematous prostatitis complicated with mechanical ileus.

References

1. Sheng-Chen Wen, Ming-Chen Paul Shih, Yung-Shun Juan. **Emphysematous prostatic abscess: case series study and review**. International Journal of Infectious Diseases. 2012 Apr;101(4):511-3.